

3rd Corrigendum Notice
(Tender No. 97761 Dated 23-05-2022)

In continuation to the tender no. 97761 Dated 23-05-2022, the drawing for the structures of the following configurations of the SPV Drinking Water Pumps were annexed with the tender (Annexure-VII);

- a) 1200Wp/1 HP/12m staging with 10KL water storage tank (16.C in Annexure VII; Page 65-69)
- b) 1200Wp/1 HP/12m staging with 12KL water storage tank (16.D in Annexure VII; Page 70-76)

have been updated with structural and manufacturing details along with relevant labelling. Accordingly, the amended drawings are being annexed with this notice.

Bidders are advised to kindly consider the updated drawings for above SPV Drinking Water Systems attached herewith. The amended drawings can also be accessed on CREDA's website under Other Documents field, labelled as "**Doc 7**" and "**Doc 8**" for above drawing a) and drawing b) respectively.

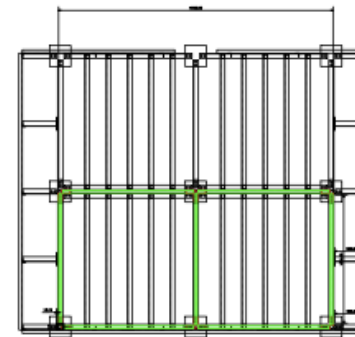
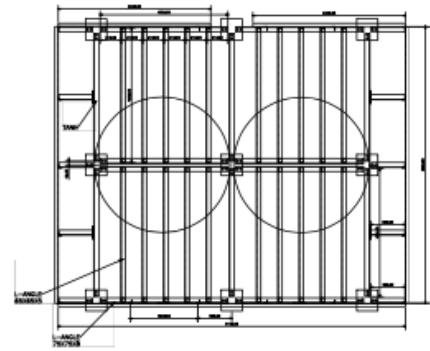
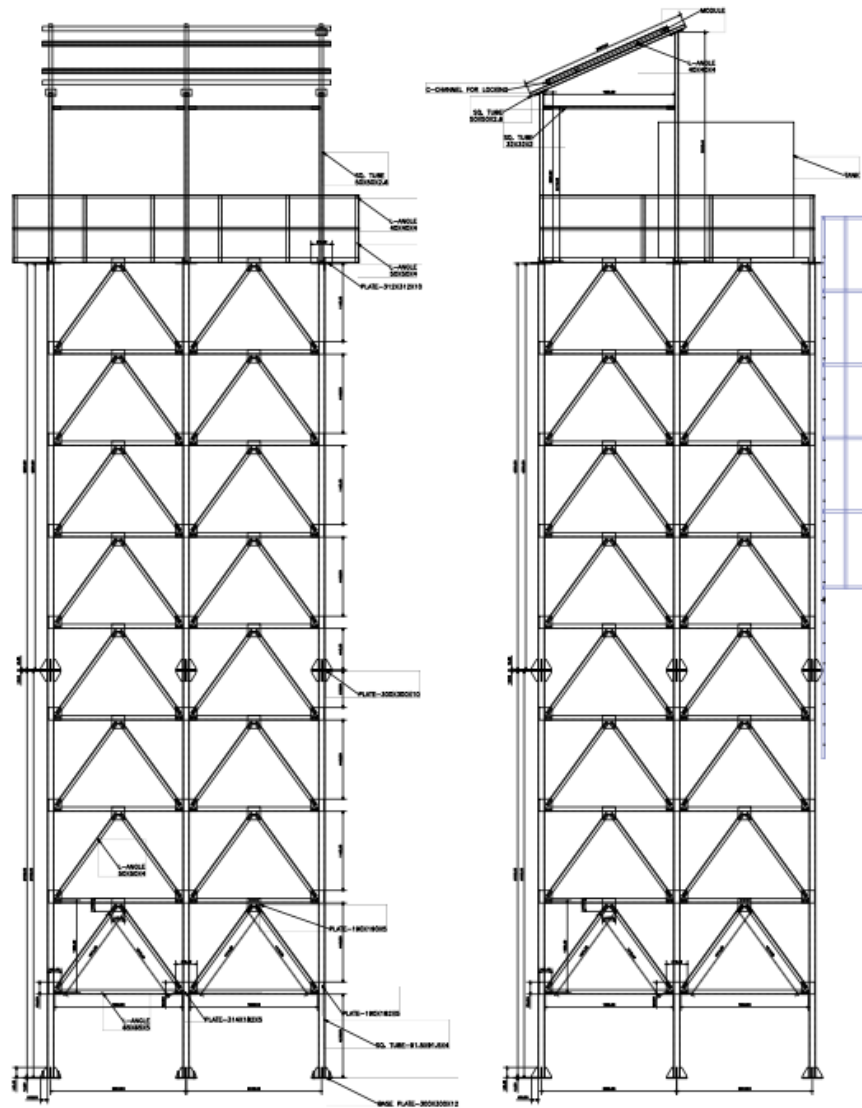
(Encl: As above)

Note:

1. All above amendments shall be applicable for every clause having same point co-related in the tender document.
2. All other terms & conditions shall remain same as per the tender document.



Sanjeev Jain
Chief Engineer (RE-V)



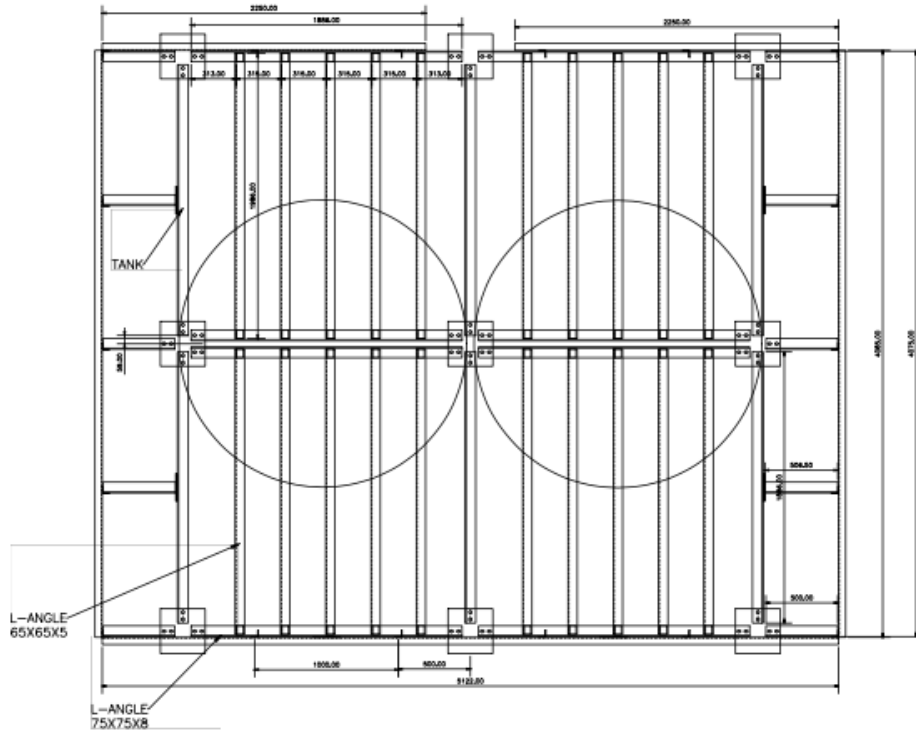
| SECTION DETAIL | |
|-----------------|----------|
| SHS-91.5X91.5X4 | 18 NOS. |
| SHS-50X50X2.6 | 9 NOS. |
| ISA-75X75X8 | 24 NOS. |
| ISA-65X65X5 | 116 NOS. |
| ISA-50X50X4 | 274 NOS. |
| ISA-40X40X4 | 36 NOS. |

Note:-All dimensions are critical. Please maintain the dimensions. Welding dimension should be maintained 5 mm.

DUAL PUMP STRUCTURE 12MTR - 10KL

Note:-
All dimensions are in mm.

| | |
|--------------------|----------------------------------|
| CREDA H.O., RAIPUR | |
| CLIENT NAME | |
| TITLE | DUAL PUMP STRUCTURE - 12MTR-10KL |
| DATE | |
| DWG NO. | |
| DRAWN BY: AUTO | DESIGNED BY:- |
| REV NO.: - 01 | SHEET NO.: - 1 |
| CHECKED BY:- | APPROVED BY:- |



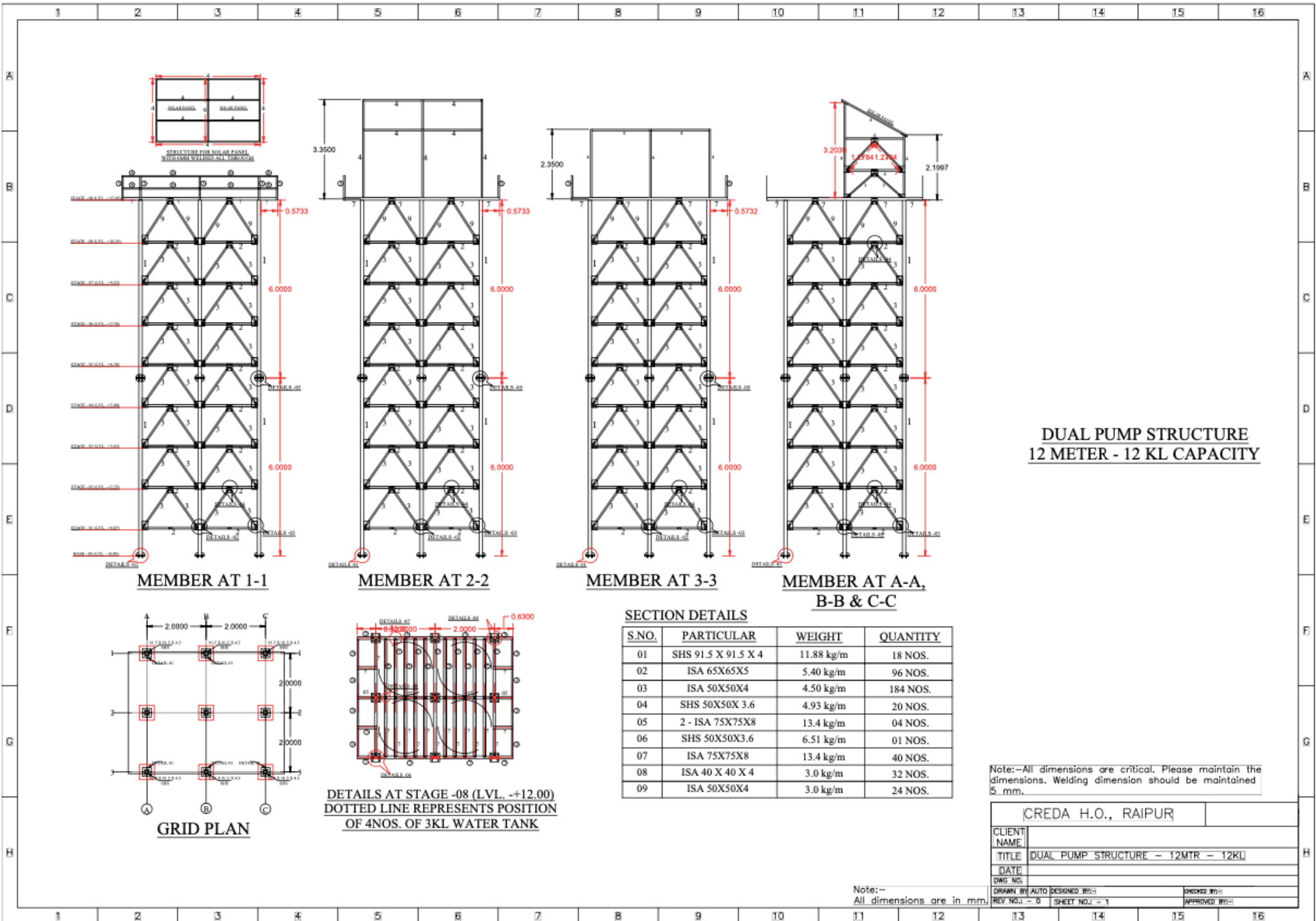
| SECTION DETAIL | |
|----------------|---------|
| ISA-75X75X8 | 24 NOS. |
| ISA-65X65X5 | 20 NOS. |
| ISA-50X50X4 | 58 NOS. |
| ISA-40X40X4 | 10 NOS. |

TANK BASE DETAIL WITH RAILING 12MTR - 10KL

Note:-All dimensions are critical. Please maintain the dimensions. Welding dimension should be maintained 5 mm.

| | |
|----------------------------|----------------------------------|
| CREDA H.O., RAIPUR | |
| CLIENT NAME | |
| TITLE | DUAL PUMP STRUCTURE - 12MTR-10KL |
| DATE | |
| DWG NO. | |
| DRAWN BY AUTO DESIGNED BY- | CHECKED BY- |
| REV NO.: - 01 | SHEET NO.: - 1 |
| APPROVED BY:- | |

Note:-
All dimensions are in mm.



**DUAL PUMP STRUCTURE
12 METER - 12 KL CAPACITY**

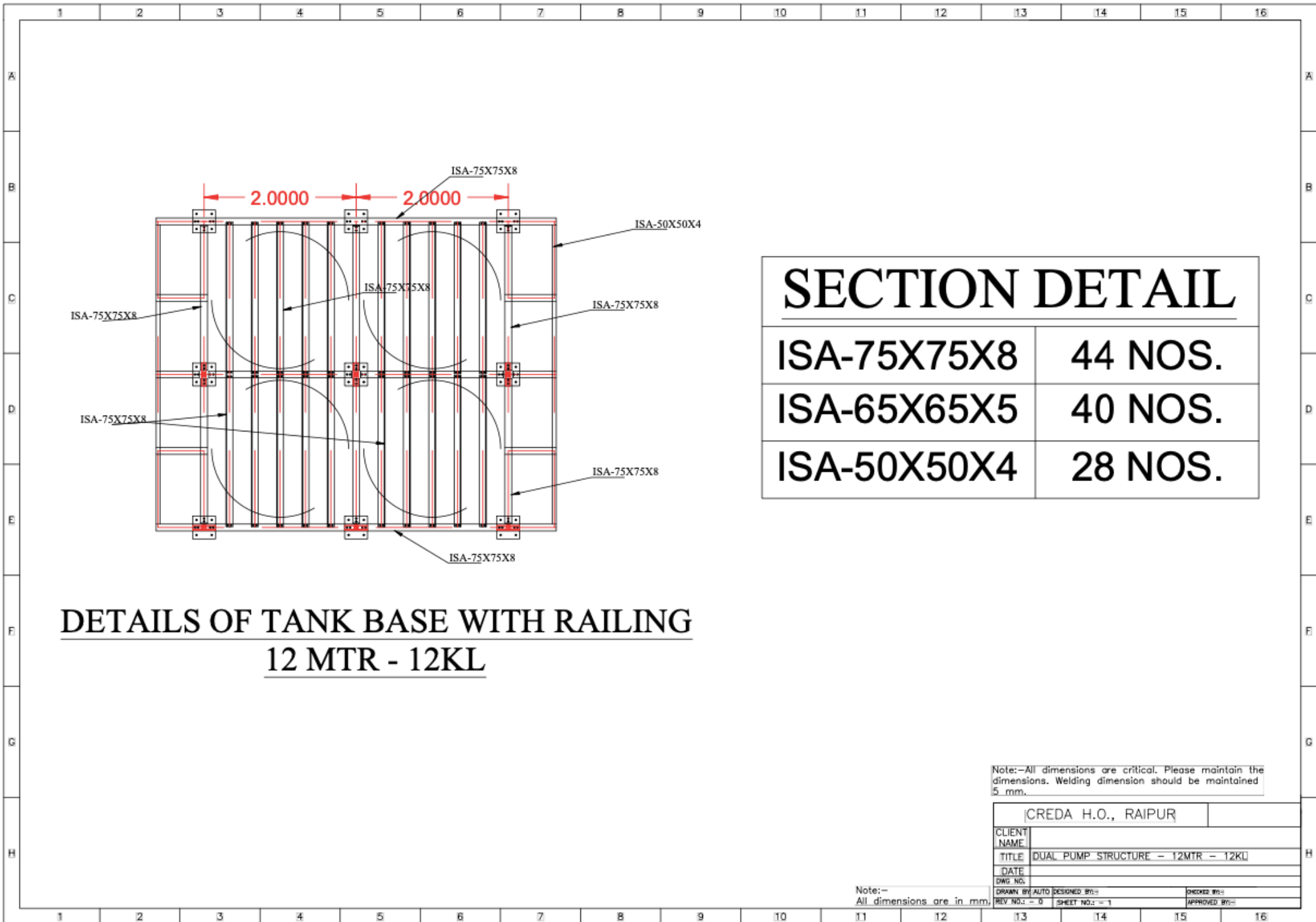
SECTION DETAILS

| S.NO. | PARTICULAR | WEIGHT | QUANTITY |
|-------|---------------------|------------|----------|
| 01 | SHS 91.5 X 91.5 X 4 | 11.88 kg/m | 18 NOS. |
| 02 | ISA 65X65X5 | 5.40 kg/m | 96 NOS. |
| 03 | ISA 50X50X4 | 4.50 kg/m | 184 NOS. |
| 04 | SHS 50X50X 3.6 | 4.93 kg/m | 20 NOS. |
| 05 | 2 - ISA 75X75X8 | 13.4 kg/m | 04 NOS. |
| 06 | SHS 50X50X3.6 | 6.51 kg/m | 01 NOS. |
| 07 | ISA 75X75X8 | 13.4 kg/m | 40 NOS. |
| 08 | ISA 40 X 40 X 4 | 3.0 kg/m | 32 NOS. |
| 09 | ISA 50X50X4 | 3.0 kg/m | 24 NOS. |

Note:-All dimensions are critical. Please maintain the dimensions. Welding dimension should be maintained 5 mm.

| | |
|----------------------------|------------------------------------|
| CREDA H.O., RAIPUR | |
| CLIENT NAME | |
| TITLE | DUAL PUMP STRUCTURE - 12MTR - 12KL |
| DATE | |
| DWG NO. | |
| DRAWN BY/AUTO DESIGNED BY: | CHECKED BY: |
| REV NO. :- 0 | SHEET NO. :- 1 |
| | APPROVED BY: |

Note:-
All dimensions are in mm.



| SECTION DETAIL | |
|-----------------------|----------------|
| ISA-75X75X8 | 44 NOS. |
| ISA-65X65X5 | 40 NOS. |
| ISA-50X50X4 | 28 NOS. |

DETAILS OF TANK BASE WITH RAILING
12 MTR - 12KL

Note:-All dimensions are critical. Please maintain the dimensions. Welding dimension should be maintained 5 mm.

| | |
|--------------------|------------------------------------|
| CREDA H.O., RAIPUR | |
| CLIENT NAME | |
| TITLE | DUAL PUMP STRUCTURE - 12MTR - 12KL |
| DATE | |
| DWG. NO. | |
| DRAWN BY: AUTO | DESIGNED BY: |
| REV. NO.: - 0 | SHEET NO.: - 1 |
| | CHECKED BY: |
| | APPROVED BY: |

Note:- All dimensions are in mm.